

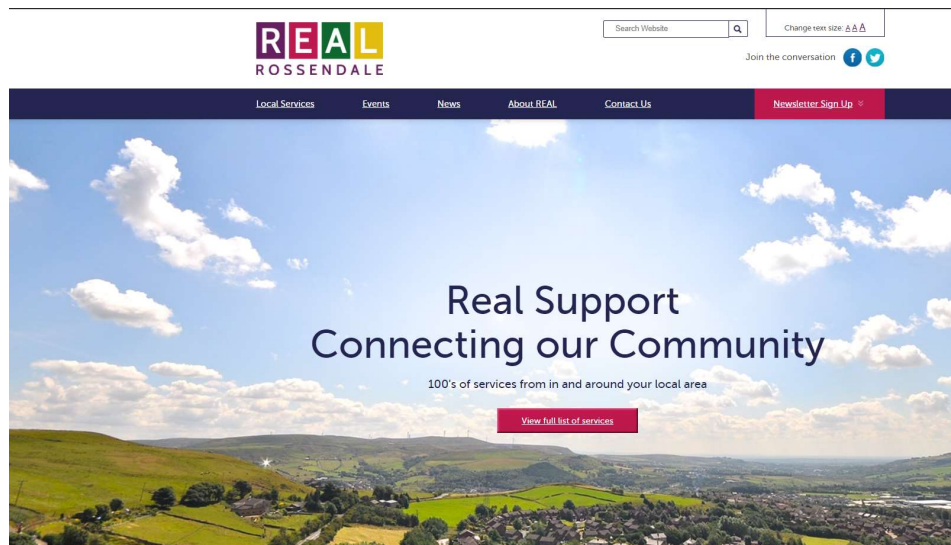
'Connecting Our Community'

an update on the REAL Rossendale website

Matt Wiseman 14th July 2017

mattwiseman@reald.co.uk 07484 151599

A Quick Recap...

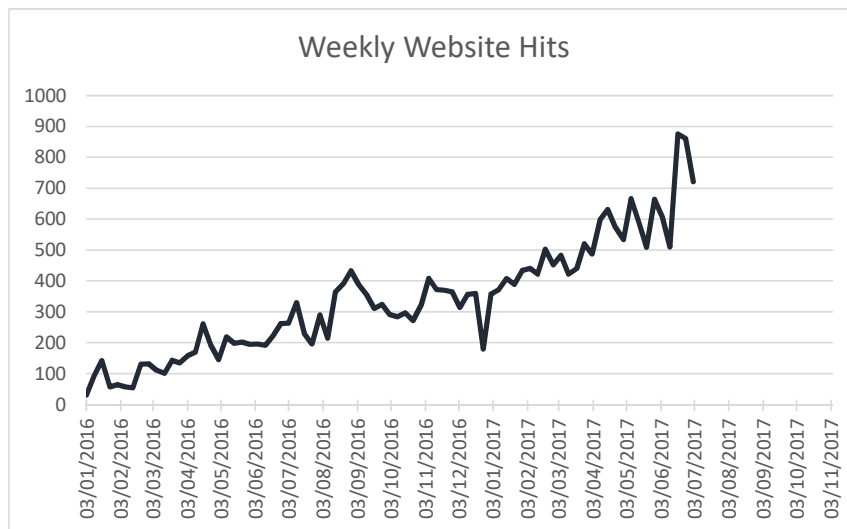


- Not just a directory of local services:
 - Directory of information about not-for-profit community groups and local services
 - Calendar of event and activities organised by local groups and services
 - News about what is going on locally
 - 'Resource Sections' on specific topics

Some Numbers



- Rossendale Site:
 - 2017 to date: 68% via search engines, 20% direct
 - visits last week 722 last month 3115



- Social media engagement
 - 663 Twitter followers
 - 131 Facebook 'likes'
- News
 - 12-14 news items per week (644 since go-live)
 - 40+ curated news items p/w
- Directory
 - 536 published services
- Events
 - 18181 Published Events (Up to Jan 2019)

A Site For Hyndburn



- A version of the Rossendale site for Hyndburn funded by CCG
- Development model:
 - Separate sites with identical structures
 - New features cascaded down to rest of network (i.e. Rossendale)

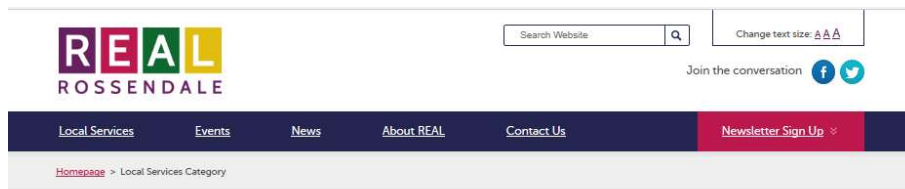
What's New



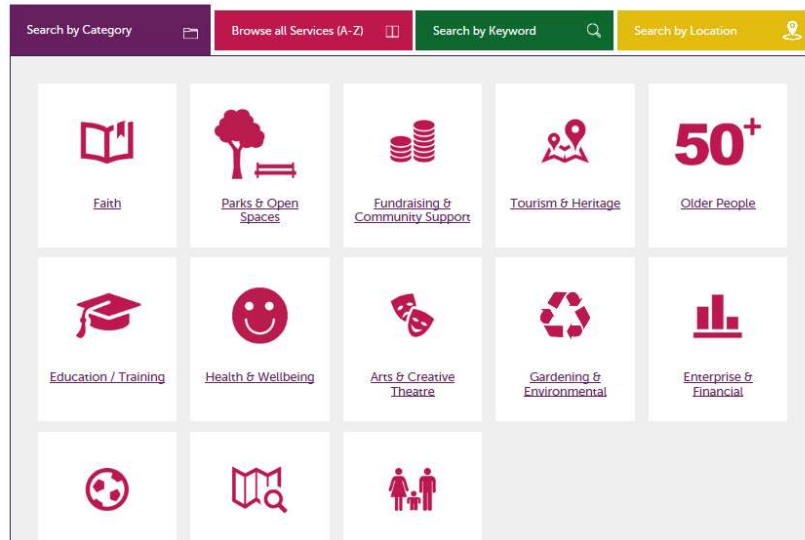
- Improved events section
 - filterable by location and category
 - week to view by default with option to see month view
 - available for specific categories/sub-categories e.g. to allow for a 'training course' calendar, or a calendar of a specific theatre's performances
 - Faster, less cluttered and easier to navigate
 - Import external calendar feeds
- User-friendly resource section page management
 - system generated for consistency and flexibility
 - 'turn on and offable' – e.g. with a tick box to allow seasonal or time-limited topics such as Christmas or Summer Holidays
- Google Translate – automatically translate all page content into choice of over 100 languages

The screenshot shows the REAL Rosendale website interface. At the top, there is a navigation bar with the REAL logo and the tagline 'CONNECTING OUR COMMUNITY'. Below the navigation bar, there is a search bar and a 'Join the conversation' button with social media icons. The main content area is titled 'Events and Activities in Your Local Area' and includes a search filter section with 'Date' and 'Keyword' input fields and a 'Find Events' button. The events are displayed in a grid format, organized by day of the week (Monday to Sunday). Each day's events are listed with titles and brief descriptions. For example, on Monday (26th), there are events like 'Carers and Toddlers at Central Church, Bacup' and 'Whitewell Bottom Breakfast Club'. On Thursday (28th), there is a featured event for 'Rubicon at Acre Mill Baptist Church' with a photo of a woman and a detailed description. The URL at the bottom of the screenshot is 't/rubicon-at-acre-mill-baptist-church/2017-07-06/'.

What Else is New



Local Services



- Volunteering template to aggregate all volunteering opportunities on one page in a resource section
- Link to online fundraising page for services
- Missing person '404 not found' project
- Many more tweaks and tidies
- Care Navigation Section
 - A resource section of 'safe', authorised material for use by care navigators
 - A 'grid layout' view to complement the existing list view

Care Navigation Section



- A resource section of approved health services for use by health professionals
- An expandable offering of services in a 'West Wakefield' grid-style format
- Information that can be delivered over the telephone, sent electronically and/or printed out in hard copy



About this site

This site provides community information to people living or working in Rossdale. You will find information here about organisations and how to access their services. You will also find recent news about them and the events they are arranging.

Are you looking for volunteering opportunities? Where organisations have opportunities available you will see this highlighted and linked to on their directory page.

[Services](#)

In the directory of services you will find 'not-for-profit' organisations and services provided for the benefit of Rossdale citizens. Some of these will be small, local groups supporting a particular cause. Others will be a nearby branch of larger organisations that may have a wider presence.

You can search in a number of ways:

[By category](#) | [In the A-Z list](#) | [Using a relevant keyword](#) | [By location](#)

[Events](#)

Here at REAL we compile a calendar of events from in and around your local area. These might be one-off events or be run on a regular basis. Type a keyword into the calendar to see what is available or browse through the calendar to see what is going on on a particular date. Alternatively, each organisation will have links to the events they are organising on their page.

[News](#)

Find out what is happening in local organisations in your local area. You will find the most recent news items listed below. You can also follow us on Twitter [@RealforRoss](#) or on Facebook [@Realrossdale](#)

Living & working in Rossdale

Rossdale is a special valley surrounded by the great scenery and beautiful countryside of the South and West Pennines Moors



Information for Patients & Patient Participation Groups

Health-related information and resources for Patients and Patient Participation Groups (PPGs)



Rossdale Cultural Arts Network

Rossdale CAN showcases and promotes the wealth of visual and performing arts talent that exists within the Rossdale Valley.



Volunteering In Rossdale

These pages offer Resources and Information about Volunteering Opportunities in Rossdale.



Latest News from REAL

[Volunteering Opportunities In Rossdale](#)

[Video Competition: Are you up for a REAL Challenge?](#)

Latest from Facebook

