

ROSSENDALE HEALTH AND WELLBEING PRIORITIES

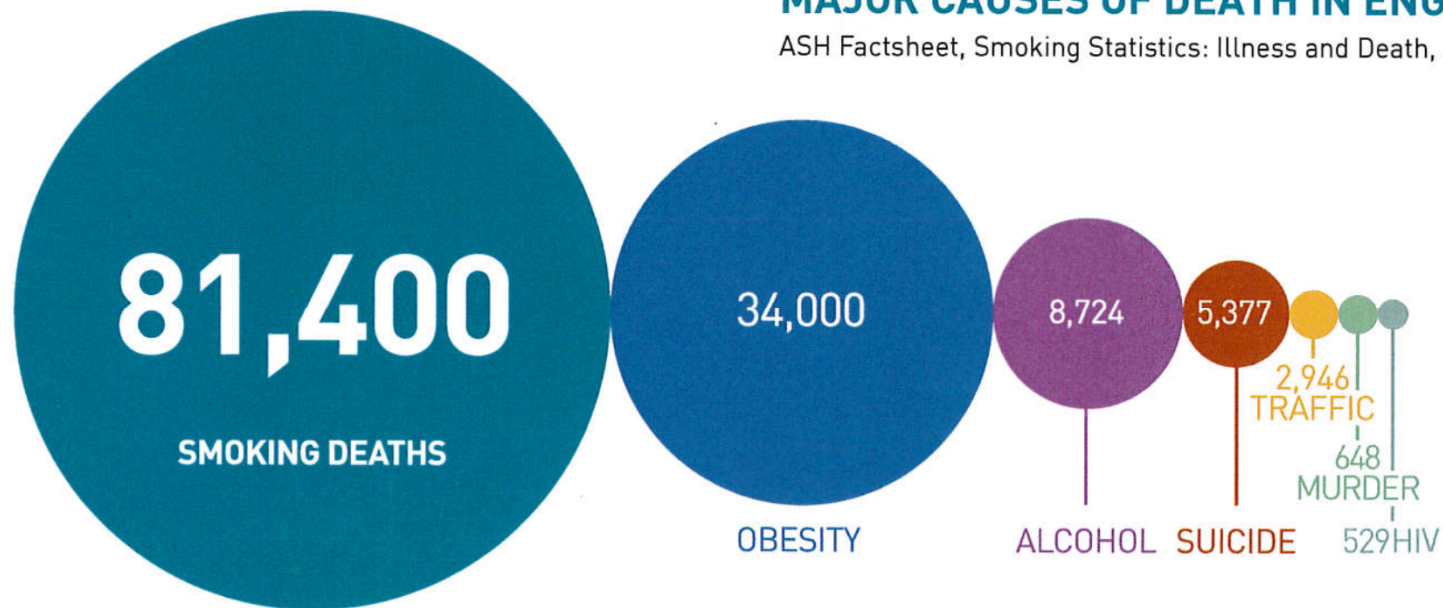
THREE PRIORITIES

- Tobacco
- Healthy Lifestyles
- Public Mental Health and Wellbeing

TOBACCO

MAJOR CAUSES OF DEATH IN ENGLAND

ASH Factsheet, Smoking Statistics: Illness and Death, June 2012



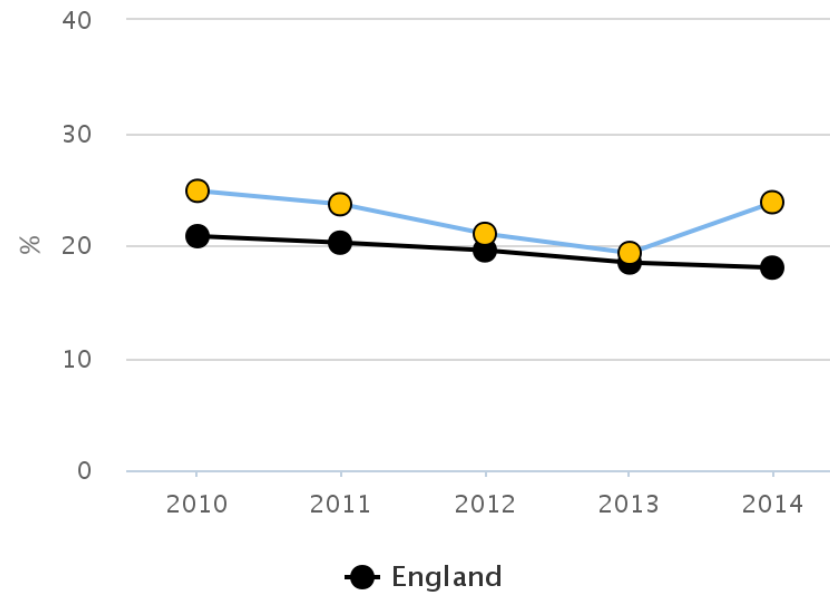
ROSSENDALE IN CONTEXT

Indicator	Period	England	North West	Lancashire	Rosendale
Smoking Prevalence Adults (%)	2014	18	19.9	19.5	23.8
Smoking Prevalence RM Occupations (%)	2014	28	28.6	29.1	36.8
Smoking-related Deaths (per 100 000)	2011-13	279.7	334.7	312.8*	358.8
Smoking-related Hospital admissions (per 100 000)	2014-15	1671	1885	1891	1890
Cost of smoking (£ per person)	2011-12	38	42.7	40.9	36.3
Smoking in Pregnancy (%)	2014-15	11.4	14.7	15.7	16.9



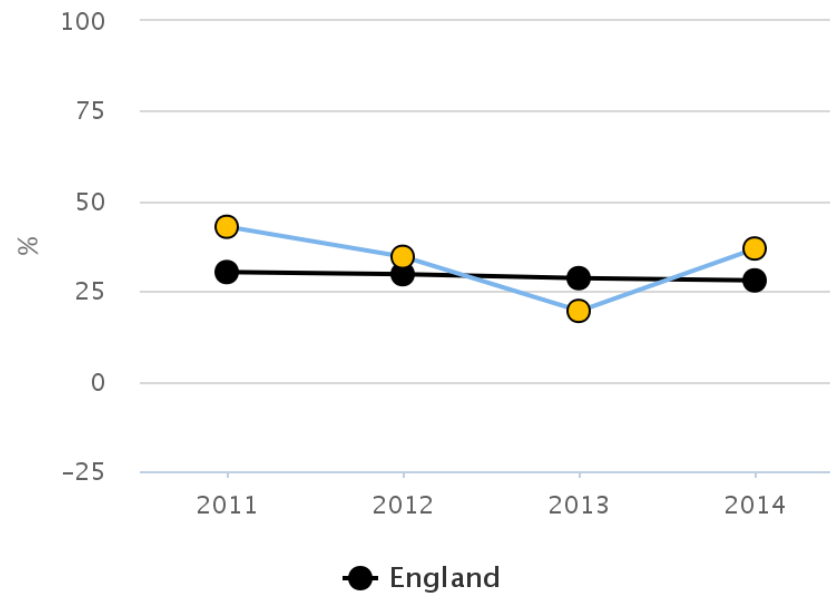
TREND: PREVALENCE (ADULTS)

Smoking Prevalence in adults - current smokers (IHS) - Rossendale



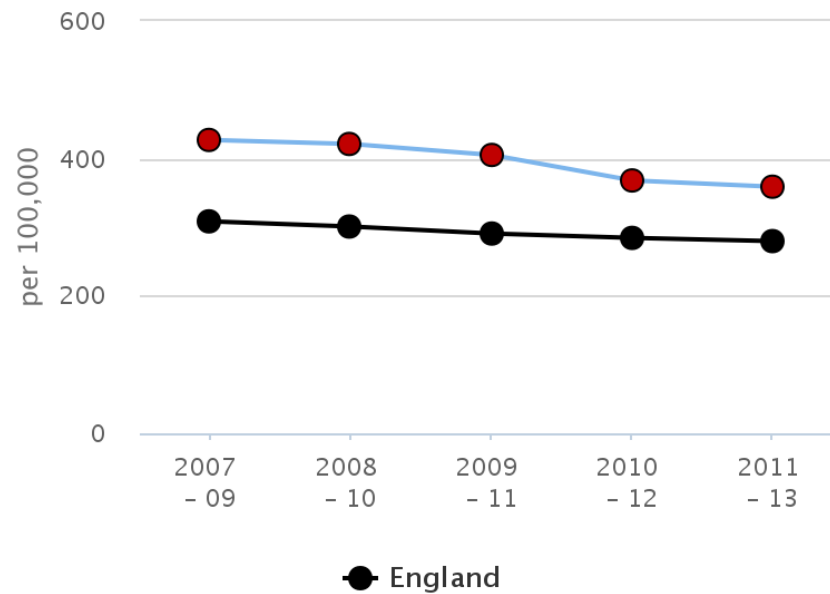
TREND: PREVALENCE (RM)

Smoking prevalence in adults in routine and manual occupations - current smokers (IHS) - Rossendale



SMOKING-RELATED DEATHS

Smoking attributable mortality - Rossendale



WHICH DISEASES?

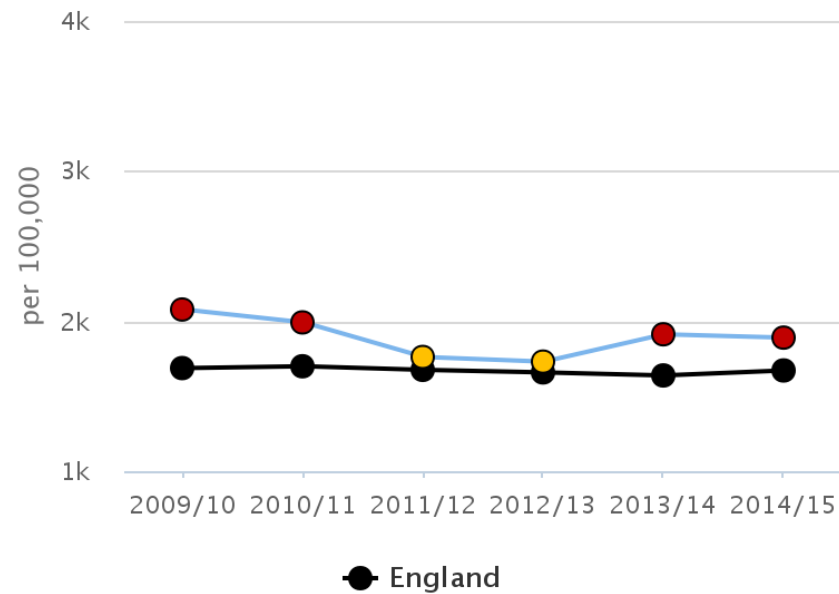
Compared with benchmark: ● Better ● Similar ● Worse



Indicator	Period	Rossendale		Region	England	England		
		Count	Value	Value	Value	Worst	Range	Best
Smoking attributable mortality	2011 - 13	376	358.8	334.7	279.7	458.5		163.5
Deaths from lung cancer	2012 - 14	126	70.1	74.5	59.5	107.7		29.8
Deaths from chronic obstructive pulmonary disease	2012 - 14	135	77.5	64.0	51.7	103.6		23.5
Smoking attributable deaths from heart disease	2012 - 14	46	42.6	35.9	29.7	58.1		16.1
Smoking attributable deaths from stroke	2012 - 14	-	*	11.3	9.3	-	<i>Insufficient number of values for a spine chart</i>	-

HOSPITAL ADMISSIONS

Smoking attributable hospital admissions - Rossendale



HEALTHY LIFESTYLES

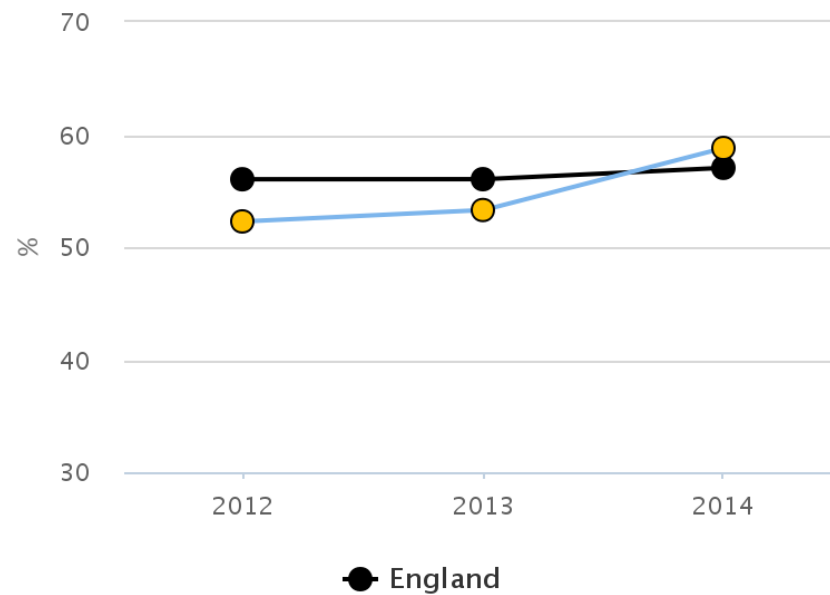
- Inactivity costs the NHS in the UK approx. £1.06 billion
- Inactivity causes significant poor health and death
- Obesity –related health problems cost £5.1 billion each year

ROSSENDALE IN CONTEXT

Indicator	Period	England	North West	Lancashire	Rossendale
Physically Active Adults (%)	2014	57	54.2	55.6	58.8
Obese Adults (%)	2012-14	24	25	24	24.1
Excess Weight in Adults (%)	2012-14	64.6	66.1	65.6	67.9

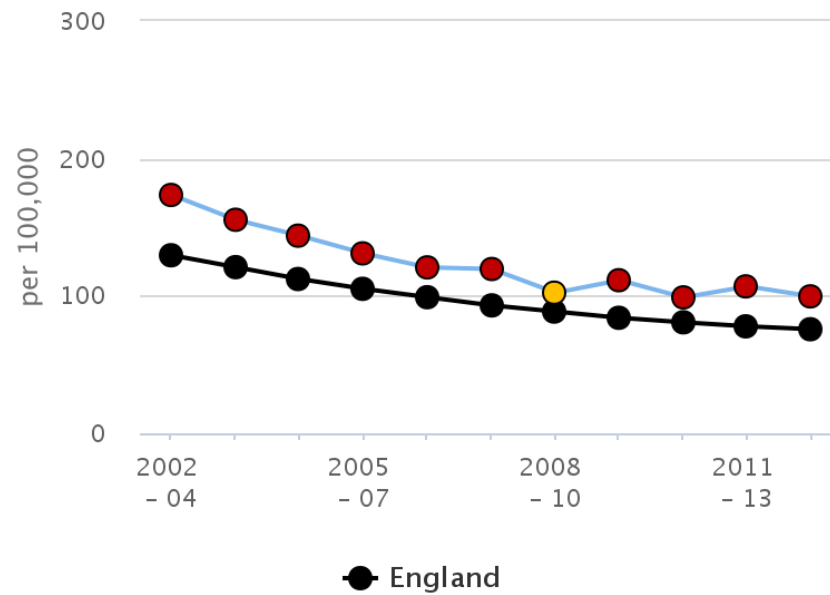
GOOD NEWS STORY?

Percentage of physically active adults – Rossendale



MORE TO DO

Under 75 mortality rate: cardiovascular - Rossendale



PUBLIC MENTAL HEALTH

- No health without mental health
- Poor mental health cost the nation of £105 billion annually
- Lancashire has one of the highest rates of suicide in England
- 50 % of lifetime mental illness starts by age 14 and 75% by the mid 20s